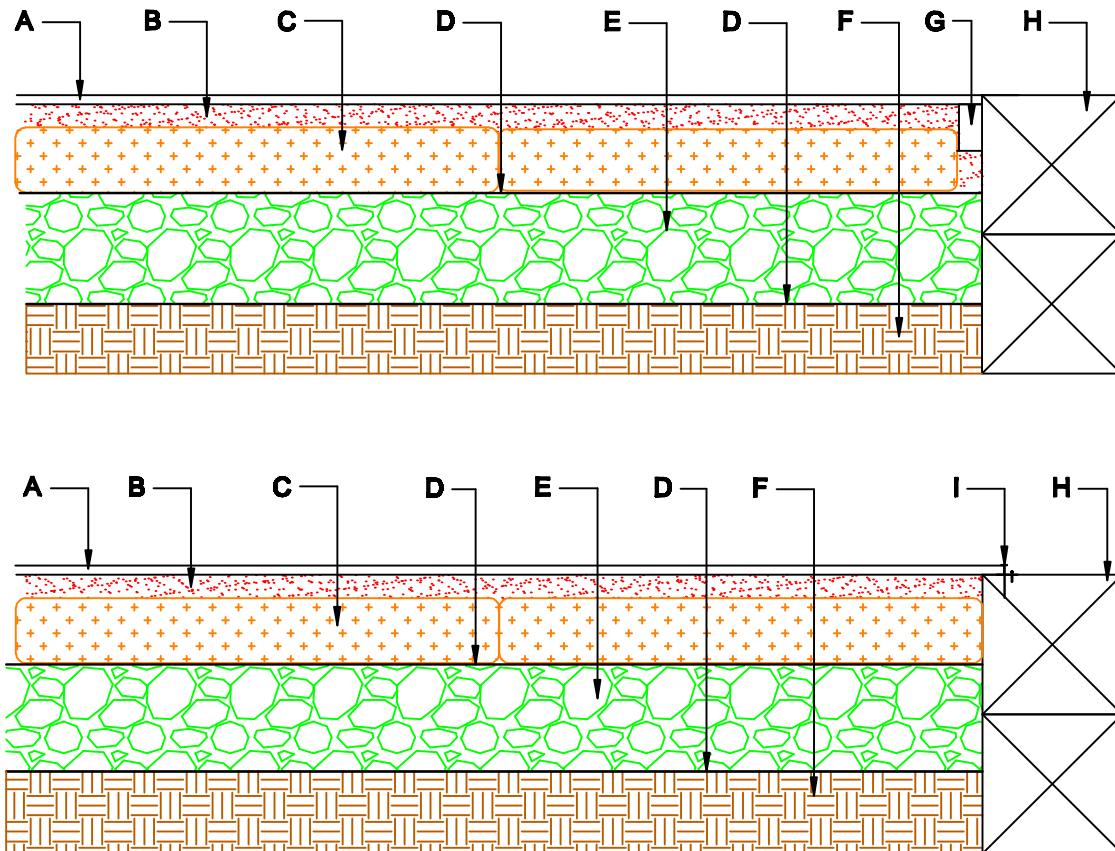


# SMARTe Installations- timber edge



**A - SMARTe PVC mat 3/8".**

**B - Loose fill rubber.**

**C - SMARTe bags.**

**D - Landscape fabric.**

**E - Compacted granular base to 95% SPD.**

**F - Sub-grade.**

**G - 1" x 2" (25mm x 50mm) timber strapping secured to timber curb.**

**H - Timber curb.**

**I - "J" molding on timber edge securing the SMARTe mat.**